

# Excel

# G6 'Compact'



## Lightweight active wheelchair

Compact foldable lightweight frame with unique folding system  
3 seat depths available in one frame with foldable backrest

Equipped with horizontal padded striped back.  
Height adjustable back, 42½, 45 and 47½ cm.  
Foldable, aluminium crossbar.  
Angle adjustable backrest (one time adjustment), 90 to 105 degrees.

Armpads made of comfortable polyurethane, contoured for extra comfort.  
Short detachable armrests, height adjustable.

Seat cushion 5 cm with non slip base.  
Adjustable seat upholstery.

Footrests detachable, swinging away and swing in.

Unique folding system in height and in width.

Front castors, 6" x 1 ¼" (polyurethane).  
Angle adjustable castor housing.

Footplates angle adjustable 90 to 105 degrees.  
Adjustable nylon heel loops on the footplates.  
Height and depth adjustable footplates.

Height adjustable push handles, also angle adjustable.

Backrest tension bar, for extra stability in the back, foldable.

Depth and angle adjustable braking system with foldable levers.

Multi adjustable rear axle (6 positions).

Detachable quick release 24" rear wheel.  
Lightweight spokes, including high pressure performance tyres.

Equipped with anti-tip wheels, height adjustable and detachable.  
With integrated tipper system.

Front seat height adjustable, standard 50 cm. (7 positions)



A unique concept with an easy folding system. This wheelchair can be disassembled to become extremely compact for transportation or storage.



Footrests swing away and detachable.  
Footplates depth adjustable.

'Smart mobility solutions'

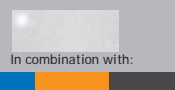
### Standard specifications

Seat width: 40, 42½, 45, 50 and 55 cm  
Seat depth: 40, 43 and 46 cm  
Seat height: 40, 43, 45, 47½, 50, 51½ and 53 cm  
Backrest height: 42½, 45 and 47½ cm (adjustable)  
Total width: Seat width + 17 cm  
Total length: > 100 cm  
Total height: > 95 cm  
Width folded: 31 cm  
Armrest height: 19-35 cm adjustable

Front castor size: 6" x 1 ¼" (other sizes available)  
Rear wheel (sp): 24" x 1" (other sizes available)

Total weight (from): 14.9 kg (depending on the model)  
Weight (transport): 9.2 kg  
Max. user weight: 150 kg

Frame colour available in:



In combination with:

Product complies with crash test ISO 7176-19:2001 and EN12183

All rights reserved. Copyright 2008© Van Os Medical B.V.®



Van Os Medical UK Ltd  
Corunna House  
42-44 Ousegate  
Selby  
YO8 4NH

Tel.: +44 (0) 1757 701177  
Fax: +44 (0) 1757 706011

sales@vanosmedical.com

[www.vanosmedical.com](http://www.vanosmedical.com)